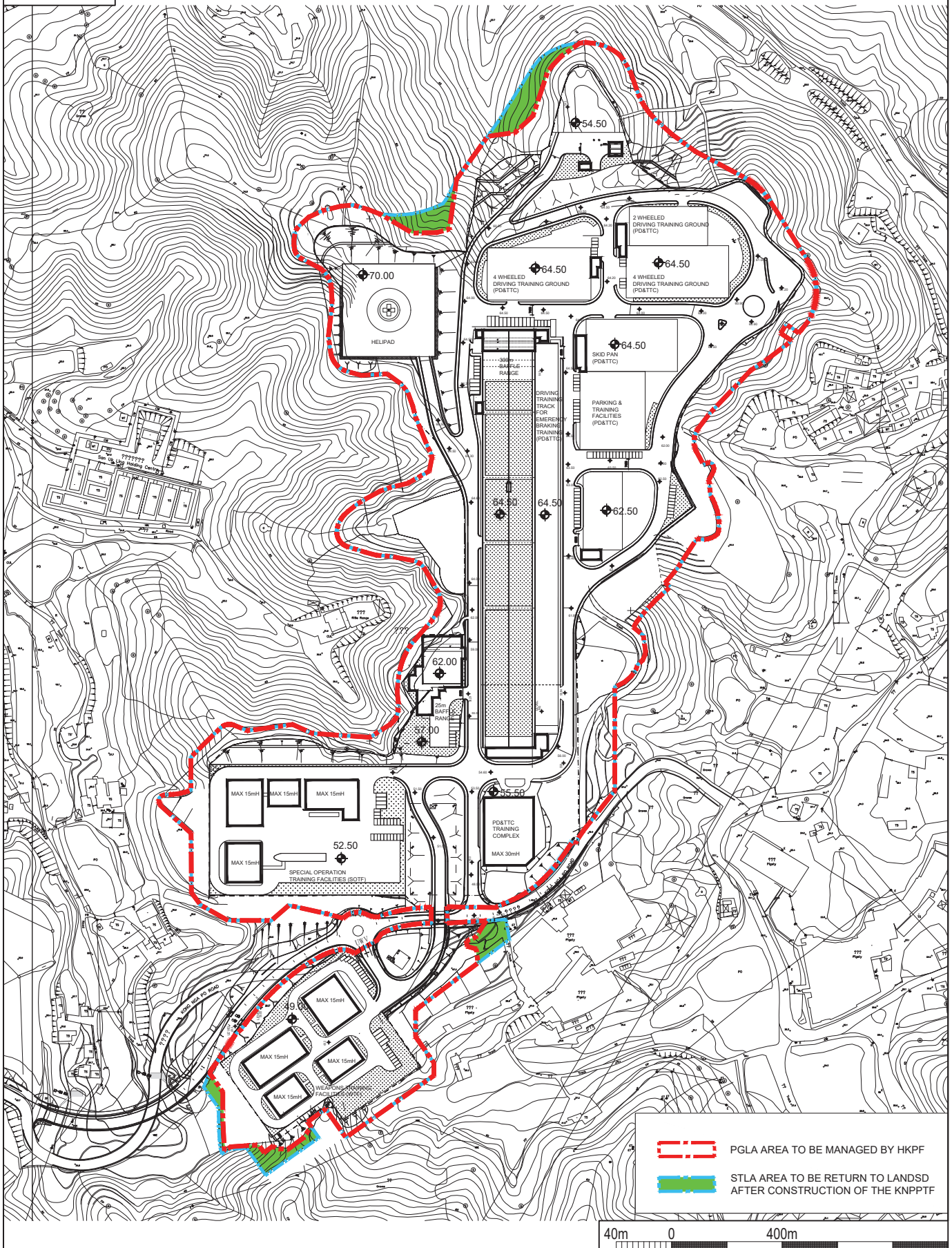


**FIGURE(S)**



PGLA AREA TO BE MANAGED BY HKPF



STLA AREA TO BE RETURN TO LANDSD  
AFTER CONSTRUCTION OF THE KNPTF

40m 0 400m

MASTER  
LAYOUT  
PLAN

PROJECT CODE: 3279LP  
PROPOSED MLP FOR KONG NGA PO  
TRAINING FACILITIES

DRAWING NO.  
PMB/8480/XA001

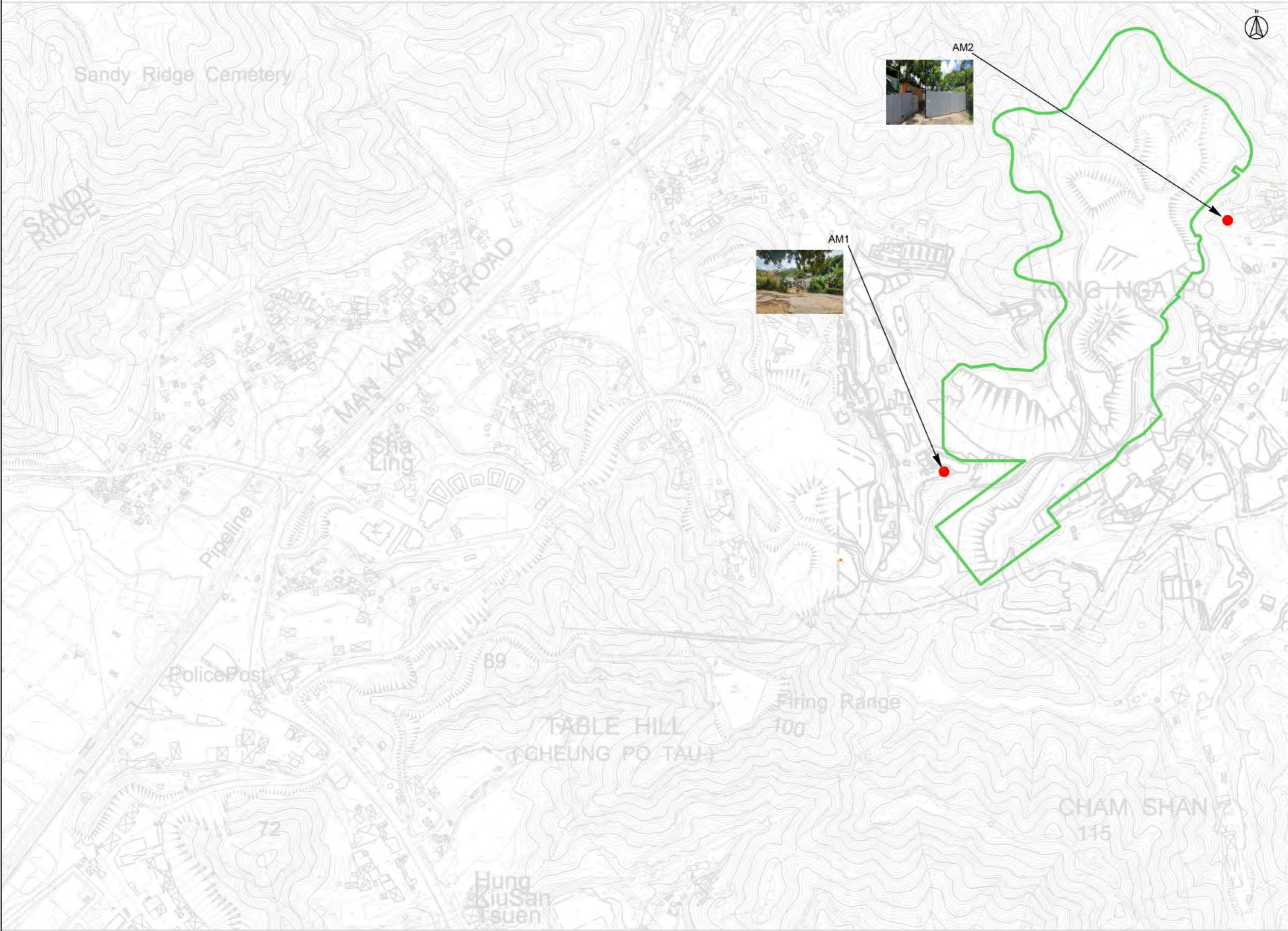
SCALE:  
1:400

DATE:  
AUGUST 2021



ARCHITECTURAL  
SERVICES  
DEPARTMENT 建築署

Figure 2 Location of Air Quality Monitoring Stations



KEY PLAN  
SCALE: 1/50000

LEGENDS:

- KONG NGA PO SITE BOUNDARY
- AIR QUALITY MONITORING STATIONS

AIR QUALITY MONITORING STATIONS	
ID	Description
AM1	Village House, Kong Nga Po
AM2	Village House, Kong Nga Po

CLIENT  
 Architectural Services Department

Environmental Team  
**嘉誠管理顧問有限公司**  
Ka Shing Management Consultancy Ltd.  
[www.ka-shing.net](http://www.ka-shing.net)

This drawing is for the sole purpose of explaining design and construction intent only. No part of this drawing or its related or implied information should supersede local and/or statutory code, regulation or requirement, including but not limited to any supplier and/or manufacturer recommendations. Ka Shing Management Consultancy Ltd. accepts no responsibility for compliance checking which should be done by suitably qualified and authorized local design institutes in all cases.

KA SHING MANAGEMENT CONSULTANCY LTD  
Unit 2, 13/F Kai Yue Commercial Building, 2C Argyle St.  
Mong Kok, Kowloon  
Tel: +852 2616 2166 Fax: +852 2120 7752  
Email: info@ka-shing.net

2	SECOND ISSUE	03/2023
1	FIRST ISSUE	03/2023

Rev.	Description	Date
------	-------------	------

Project Title  
  
PROVISION OF ENVIRONMENTAL TEAM  
CONSULTANCY FOR DESIGN AND  
CONSTRUCTION OF KONG NGA PO  
POLICE TRAINING FACILITIES

Drawing Title  
KONG NGA PO ROAD  
AIR QUALITY MONITORING STATIONS

Drawing Status	
Project Ref.	File Ref.
Drawn by	Checked by
Scale	Paper Size
Date	Revision

Drawing Number  
  
KASHING-KNPR-DWG-002

Figure 3      Location of Noise Monitoring Stations



KEY PLAN  
SCALE: 1:50000

LEGENDS  
KONG NGA PO SITE BOUNDARY  
NOISE MONITORING STATIONS

NOISE MONITORING STATIONS	
ID	Description
NM9	Village House, Kong Nga Po
NM10	Village House, Kong Nga Po
NM11	Village House, Kong Nga Po
NM12	Village House, Kong Nga Po
NM13	Village House, Kong Nga Po
NM14	Village House, near Man Kam To Road

CLIENT  
建築署  
Architectural Services Department

Environmental Team  
嘉誠管理顧問有限公司  
Ka Shing Management Consultancy Limited  
www.ka-shing.net

This drawing is for the sole purpose of explaining design and construction intent only. No part of this drawing or its related or implied information should supersede local and/or statutory code, regulation or requirement, including but not limited to any supplier and/or manufacturer recommendations. Ka Shing Management Consultancy Ltd accepts no responsibility for compliance checking which should be done by suitably qualified and authorized local design institutes in all cases.

KA SHING MANAGEMENT CONSULTANCY LTD  
Unit 2, 13/F Kai Yue Commercial Building, 20 Argyle St, Mong Kok, Kowloon  
Tel: +852 2818 2166 Fax: +852 2120 7752  
Email: info@ka-shing.net

2	SECOND ISSUE	03/2023
1	FIRST ISSUE	03/2023

Rev.	Description	Date

Project Title

PROVISION OF ENVIRONMENTAL TEAM CONSULTANCY FOR DESIGN AND CONSTRUCTION OF KONG NGA PO POLICE TRAINING FACILITIES

Drawing Title

KONG NGA PO ROAD NOISE MONITORING STATION

Drawing Status

Project Ref.	File Ref.
Drawn by	Checked by
JC	RH
Scale	Paper Size
1:40000	A3
Date	Revision

Drawing Number

KASHING-KNPR-DWG-003