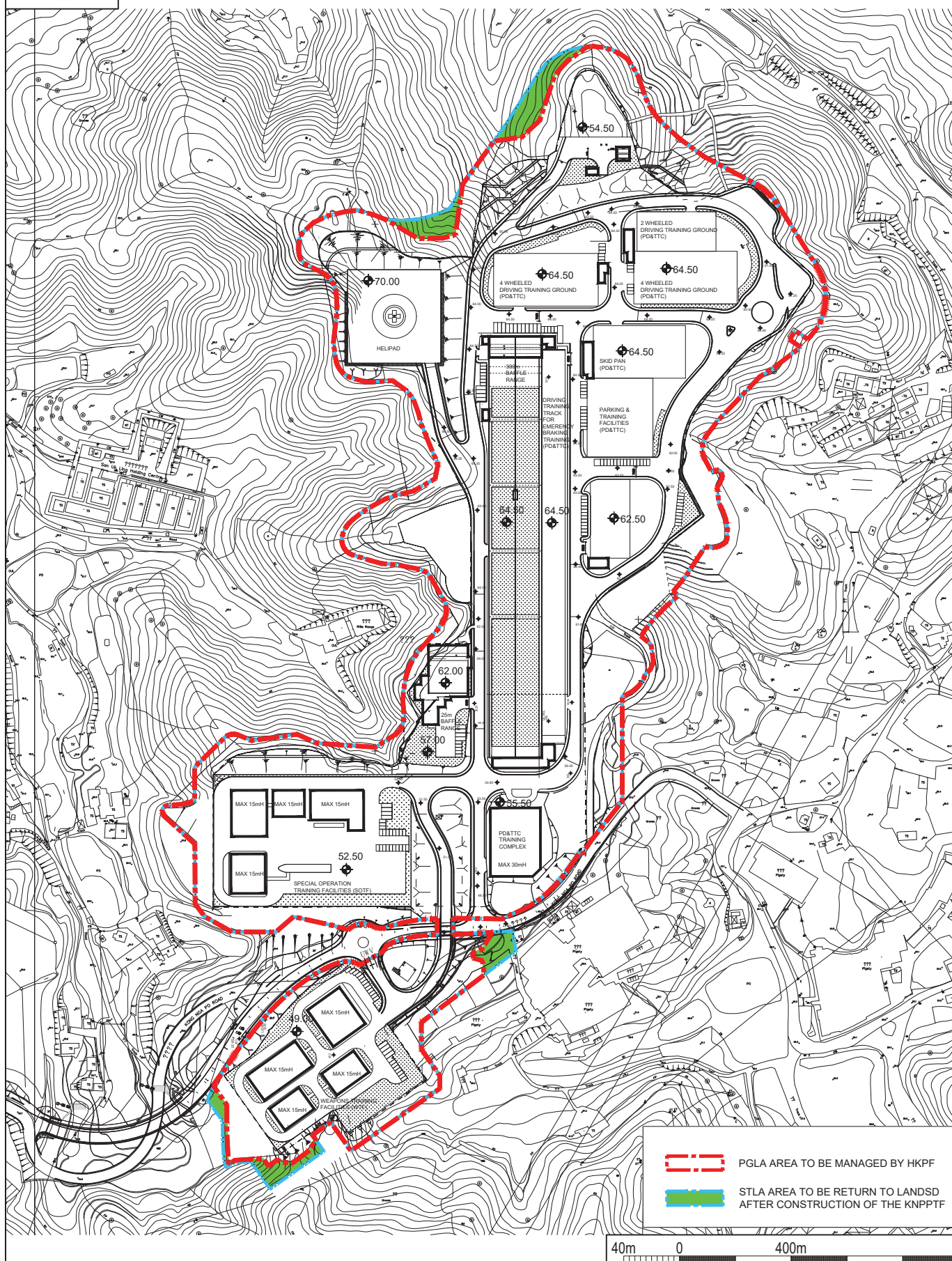


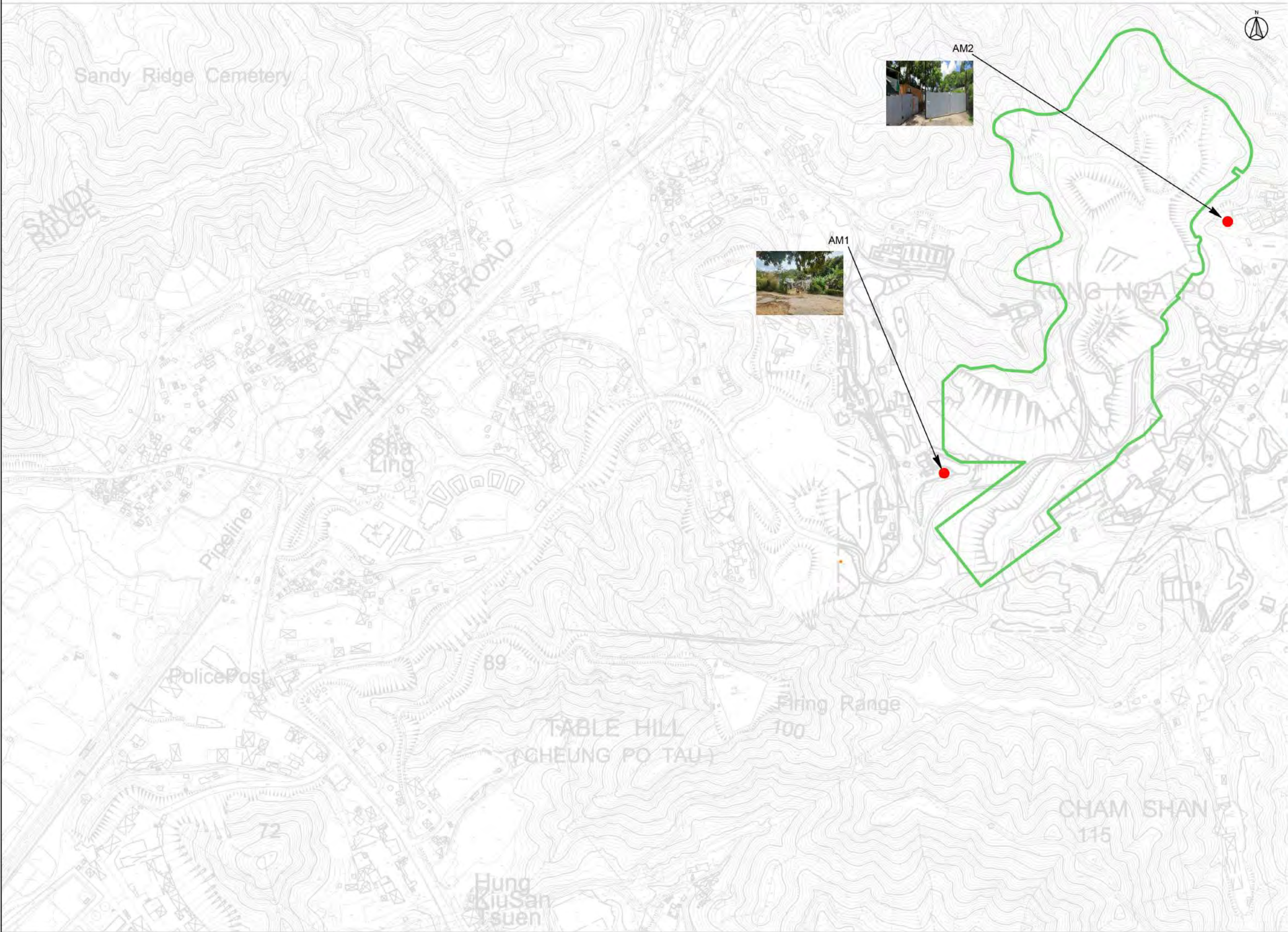
**FIGURE(S)**



ARCHITECTURAL  
SERVICES  
DEPARTMENT 建築署



Figure 2 Location of Air Quality Monitoring Stations



KEY PLAN  
SCALE: 1/50000

LEGENDS:

- KONG NGA PO SITE BOUNDARY
- AIR QUALITY MONITORING STATIONS

AIR QUALITY MONITORING STATIONS	
ID	Description
AM1	Village House, Kong Nga Po
AM2	Village House, Kong Nga Po

CLIENT  
 Architectural Services Department

Environmental Team  
**嘉誠管理顧問有限公司**  
Ka Shing Management Consultancy Ltd.  
[www.ka-shing.net](http://www.ka-shing.net)

This drawing is for the sole purpose of explaining design and construction intent only. No part of this drawing or its related or implied information should supersede local and/or statutory code, regulation or requirement, including but not limited to any supplier and/or manufacturer recommendations. Ka Shing Management Consultancy Ltd. accepts no responsibility for compliance checking which should be done by suitably qualified and authorized local design institutes in all cases.

KA SHING MANAGEMENT CONSULTANCY LTD  
Unit 2, 13/F Kai Yue Commercial Building, 2C Argyle St.  
Mong Kok, Kowloon  
Tel: +852 2616 2166 Fax: +852 2120 7752  
Email: [info@ka-shing.net](mailto:info@ka-shing.net)

2	SECOND ISSUE	03/2023
1	FIRST ISSUE	03/2023

Rev.	Description	Date
Project Title		
PROVISION OF ENVIRONMENTAL TEAM CONSULTANCY FOR DESIGN AND CONSTRUCTION OF KONG NGA PO POLICE TRAINING FACILITIES		

Drawing Title  
KONG NGA PO ROAD  
AIR QUALITY MONITORING STATIONS

Drawing Status	
Project Ref.	File Ref.
Drawn by	Checked by
Scale	Paper Size
Date	Revision
Drawing Number	



Figure 3 Location of Noise Monitoring Stations

