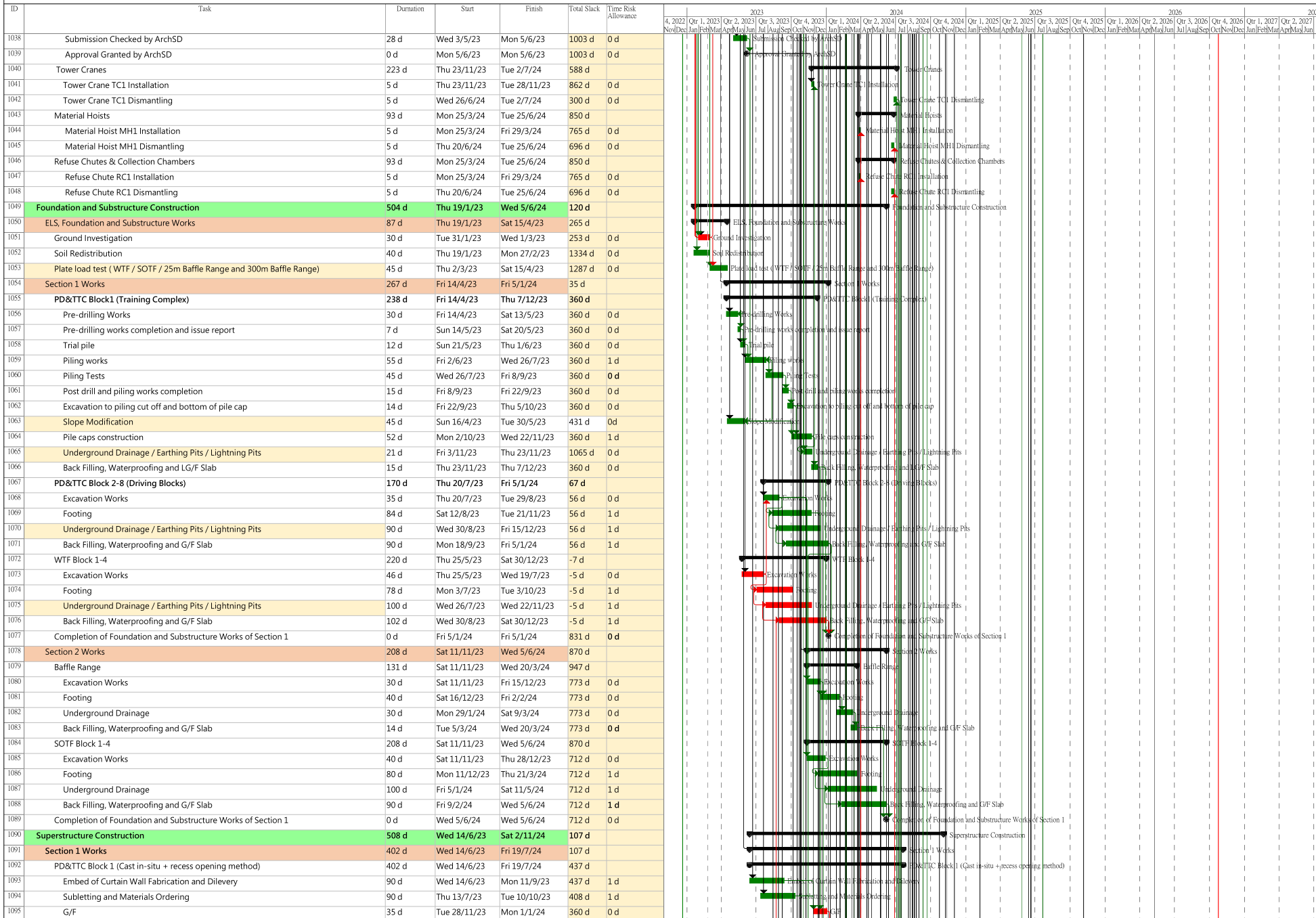


**APPENDIX A**  
**CONSTRUCTION PROGRAMME AND**  
**PROACTIVE ENVIRONMENTAL**  
**PROTECTION PROFORMA**

# Construction Programme (Jan – Mar 2024)

**Design & Construction of Kong Nga Po Police Training Facilities**  
**Master Programme (MP)**

Revision : 02



	Task		Milestone		Inactive Milestone		Manual Task		Manual Summary Rollup		Start-only		External Tasks	
	Critical Task		Summary		Inactive Summary		Duration-only		Manual Summary		Finish-only		External Milestone	

### Design & Construction of Kong Nga Po Police Training Facilities Master Programme (MP)

Revision : 02

ID	Task	Duration	Start	Finish	Total Slack	Time Risk Allowance	Gantt Chart (2022-2027)																																															
							4, 2022	Qtr 1, 2023	Qtr 2, 2023	Qtr 3, 2023	Qtr 4, 2023	Qtr 1, 2024	Qtr 2, 2024	Qtr 3, 2024	Qtr 4, 2024	Qtr 1, 2025	Qtr 2, 2025	Qtr 3, 2025	Qtr 4, 2025	Qtr 1, 2026	Qtr 2, 2026	Qtr 3, 2026	Qtr 4, 2026	Qtr 1, 2027	Qtr 2, 2027	Qtr 3, 2027	Qtr 4, 2027	Qtr 1, 2028	Qtr 2, 2028	Qtr 3, 2028	Qtr 4, 2028	Qtr 1, 2029	Qtr 2, 2029	Qtr 3, 2029	Qtr 4, 2029	Qtr 1, 2030	Qtr 2, 2030	Qtr 3, 2030	Qtr 4, 2030	Qtr 1, 2031	Qtr 2, 2031	Qtr 3, 2031	Qtr 4, 2031	Qtr 1, 2032	Qtr 2, 2032	Qtr 3, 2032	Qtr 4, 2032	Qtr 1, 2033	Qtr 2, 2033	Qtr 3, 2033	Qtr 4, 2033			
1096	1/F	30 d	Thu 28/12/23	Fri 26/1/24	360 d	0 d	[Gantt bar for 1/F task]																																															
1097	2/F	18 d	Mon 22/1/24	Thu 8/2/24	360 d	0 d	[Gantt bar for 2/F task]																																															
1098	3/F	18 d	Sun 4/2/24	Wed 21/2/24	360 d	0 d	[Gantt bar for 3/F task]																																															
1099	4/F	18 d	Mon 19/2/24	Thu 7/3/24	366 d	0 d	[Gantt bar for 4/F task]																																															
1100	R/F	18 d	Wed 6/3/24	Sat 23/3/24	366 d	0 d	[Gantt bar for R/F task]																																															
1101	UR/F	14 d	Sun 24/3/24	Sat 6/4/24	366 d	0 d	[Gantt bar for UR/F task]																																															
1102	TR/F	14 d	Sun 7/4/24	Sat 20/4/24	366 d	0 d	[Gantt bar for TR/F task]																																															
1103	Opening of Tower Crane	17 d	Wed 3/7/24	Fri 19/7/24	371 d	0 d	[Gantt bar for Opening of Tower Crane task]																																															
1104	MIC Installation (Lifting through opening + Slide-in method)	310 d	Mon 21/8/23	Tue 25/6/24	372 d	0 d	[Gantt bar for MIC Installation task]																																															
1105	Structural Materials Submission & Approval	60 d	Mon 21/8/23	Thu 19/10/23	372 d	1 d	[Gantt bar for Structural Materials Submission & Approval task]																																															
1106	Fitting Out Materials Submission & Approval	60 d	Tue 24/10/23	Fri 22/12/23	1036 d	1 d	[Gantt bar for Fitting Out Materials Submission & Approval task]																																															
1107	Structural materials Ordering and Fabrication of MIC Carcass	65 d	Fri 20/10/23	Sat 23/12/23	372 d	1 d	[Gantt bar for Structural materials Ordering and Fabrication of MIC Carcass task]																																															
1108	MIC Fabrication / Installation and Delivery on Site	110 d	Sun 24/12/23	Thu 11/4/24	372 d	1 d	[Gantt bar for MIC Fabrication / Installation and Delivery on Site task]																																															
1109	On-site Trial Installation	5 d	Fri 12/4/24	Tue 16/4/24	372 d	0 d	[Gantt bar for On-site Trial Installation task]																																															
1110	MIC / MiMep / Precast Beam and Slab Installation	70 d	Wed 17/4/24	Tue 25/6/24	372 d	1 d	[Gantt bar for MIC / MiMep / Precast Beam and Slab Installation task]																																															
1111	PD&TTC Block 2-8 and Carpark	82 d	Thu 30/11/23	Mon 19/2/24	68 d	0 d	[Gantt bar for PD&TTC Block 2-8 and Carpark task]																																															
1112	Block 2 Carpark	14 d	Thu 30/11/23	Fri 15/12/23	56 d	0 d	[Gantt bar for Block 2 Carpark task]																																															
1113	Block 3 (2-wheeled driving ground) (5Nos.of MIC)	7 d	Sat 16/12/23	Sat 23/12/23	56 d	0 d	[Gantt bar for Block 3 (2-wheeled driving ground) (5Nos.of MIC) task]																																															
1114	Block 4 (Emergency Braking Training) (11Nos.of MIC)	10 d	Mon 25/12/23	Sat 6/1/24	56 d	0 d	[Gantt bar for Block 4 (Emergency Braking Training) (11Nos.of MIC) task]																																															
1115	Block 5 (Skid Pad) (14 Nos.of MIC)	14 d	Mon 8/1/24	Tue 23/1/24	56 d	0 d	[Gantt bar for Block 5 (Skid Pad) (14 Nos.of MIC) task]																																															
1116	Block 6 (4-wheeled driving ground) (5Nos.of MIC)	7 d	Wed 24/1/24	Wed 31/1/24	56 d	0 d	[Gantt bar for Block 6 (4-wheeled driving ground) (5Nos.of MIC) task]																																															
1117	Block 7 (2-wheeled & 4-wheeled driving ground) (10Nos.of MIC)	10 d	Thu 1/2/24	Mon 19/2/24	56 d	0 d	[Gantt bar for Block 7 (2-wheeled & 4-wheeled driving ground) (10Nos.of MIC) task]																																															
1118	Fuel filling Station	87 d	Mon 16/10/23	Wed 10/1/24	463 d	0 d	[Gantt bar for Fuel filling Station task]																																															
1119	Underground fuel tank	45 d	Mon 16/10/23	Wed 6/12/23	377 d	0 d	[Gantt bar for Underground fuel tank task]																																															
1120	Backfilling and G/F slab	14 d	Thu 7/12/23	Fri 22/12/23	377 d	0 d	[Gantt bar for Backfilling and G/F slab task]																																															
1121	Fuel station superstructure	14 d	Sat 23/12/23	Wed 10/1/24	377 d	0 d	[Gantt bar for Fuel station superstructure task]																																															
1122	WTF Block 1-4	161 d	Fri 6/10/23	Thu 14/3/24	-7 d	0 d	[Gantt bar for WTF Block 1-4 task]																																															
1123	Block 1 (Admin Block)	68 d	Fri 6/10/23	Tue 12/1/24	-7 d	0 d	[Gantt bar for Block 1 (Admin Block) task]																																															
1124	1/F	21 d	Fri 6/10/23	Tue 31/10/23	-5 d	0 d	[Gantt bar for Block 1 1/F task]																																															
1125	2/F	16 d	Mon 30/10/23	Thu 16/11/23	-5 d	0 d	[Gantt bar for Block 1 2/F task]																																															
1126	R/F	12 d	Wed 15/11/23	Tue 28/11/23	-5 d	0 d	[Gantt bar for Block 1 R/F task]																																															
1127	TR/F	14 d	Mon 27/11/23	Tue 12/12/23	-5 d	0 d	[Gantt bar for Block 1 TR/F task]																																															
1128	Block 2 (Arcade and Residential Mock Bldg.)	68 d	Fri 6/10/23	Tue 12/1/24	2 d	0 d	[Gantt bar for Block 2 (Arcade and Residential Mock Bldg.) task]																																															
1129	1/F	21 d	Fri 6/10/23	Tue 31/10/23	2 d	0 d	[Gantt bar for Block 2 1/F task]																																															
1130	2/F	16 d	Mon 30/10/23	Thu 16/11/23	2 d	0 d	[Gantt bar for Block 2 2/F task]																																															
1131	R/F	12 d	Wed 15/11/23	Tue 28/11/23	2 d	0 d	[Gantt bar for Block 2 R/F task]																																															
1132	TR/F	14 d	Mon 27/11/23	Tue 12/12/23	2 d	0 d	[Gantt bar for Block 2 TR/F task]																																															
1133	Block 3 (MOE Bldg.)	95 d	Mon 11/12/23	Thu 14/3/24	-6 d	0 d	[Gantt bar for Block 3 (MOE Bldg.) task]																																															
1134	1/F	26 d	Mon 11/12/23	Thu 11/1/24	-5 d	0 d	[Gantt bar for Block 3 1/F task]																																															
1135	2/F	18 d	Wed 10/1/24	Tue 30/1/24	-5 d	0 d	[Gantt bar for Block 3 2/F task]																																															
1136	R/F	18 d	Mon 29/1/24	Sat 24/2/24	-5 d	0 d	[Gantt bar for Block 3 R/F task]																																															
1137	TR/F	18 d	Fri 23/2/24	Thu 14/3/24	-5 d	0 d	[Gantt bar for Block 3 TR/F task]																																															
1138	Block 4 (Marine Mock Bldg.)	95 d	Mon 11/12/23	Thu 14/3/24	2 d	0 d	[Gantt bar for Block 4 (Marine Mock Bldg.) task]																																															
1139	1/F	26 d	Mon 11/12/23	Thu 11/1/24	2 d	0 d	[Gantt bar for Block 4 1/F task]																																															
1140	2/F	18 d	Wed 10/1/24	Tue 30/1/24	2 d	0 d	[Gantt bar for Block 4 2/F task]																																															
1141	R/F	18 d	Mon 29/1/24	Sat 24/2/24	2 d	0 d	[Gantt bar for Block 4 R/F task]																																															
1142	TR/F	18 d	Fri 23/2/24	Thu 14/3/24	2 d	0 d	[Gantt bar for Block 4 TR/F task]																																															
1143	Completion of Superstructure of Section 1	0 d	Sat 20/4/24	Sat 20/4/24	370 d	0 d	[Gantt bar for Completion of Superstructure of Section 1 task]																																															
1144	Section 2 Works	257 d	Tue 20/2/24	Sat 2/11/24	16 d	0 d	[Gantt bar for Section 2 Works task]																																															
1145	Baffle Range	129 d	Tue 20/2/24	Thu 27/6/24	69 d	0 d	[Gantt bar for Baffle Range task]																																															
1146	300m Baffle Range	75 d	Tue 20/2/24	Wed 22/5/24	56 d	0 d	[Gantt bar for 300m Baffle Range task]																																															
1147	Installation of precast fence wall	30 d	Tue 20/2/24	Mon 25/3/24	56 d	0 d	[Gantt bar for Installation of precast fence wall task]																																															
1148	Installation of precast baffle	30 d	Wed 20/3/24	Fri 26/4/24	744 d	0 d	[Gantt bar for Installation of precast baffle task]																																															
1149	Baffle Range Ancillary Structure	45 d	Tue 26/3/24	Wed 22/5/24	56 d	0 d	[Gantt bar for Baffle Range Ancillary Structure task]																																															
1150	Completion of 300m baffle range	0 d	Wed 22/5/24	Wed 22/5/24	56 d	0 d	[Gantt bar for Completion of 300m baffle range task]																																															
1151	25m Baffle Range	30 d	Thu 23/5/24	Thu 27/6/24	56 d	0 d	[Gantt bar for 25m Baffle Range task]																																															
1152	Helipad	45 d	Fri 28/6/24	Tue 20/8/24	56 d	0 d	[Gantt bar for Helipad task]																																															
1153	SOTF Block 1-4	235 d	Wed 13/3/24	Sat 2/11/24	-6 d	0 d	[Gantt bar for SOTF Block 1-4 task]																																															

Task  
Critical Task

Milestone  
Summary

Inactive Milestone  
Inactive Summary

Manual Task  
Duration-only

Manual Summary  
Manual Summary

Start-only  
Finish-only

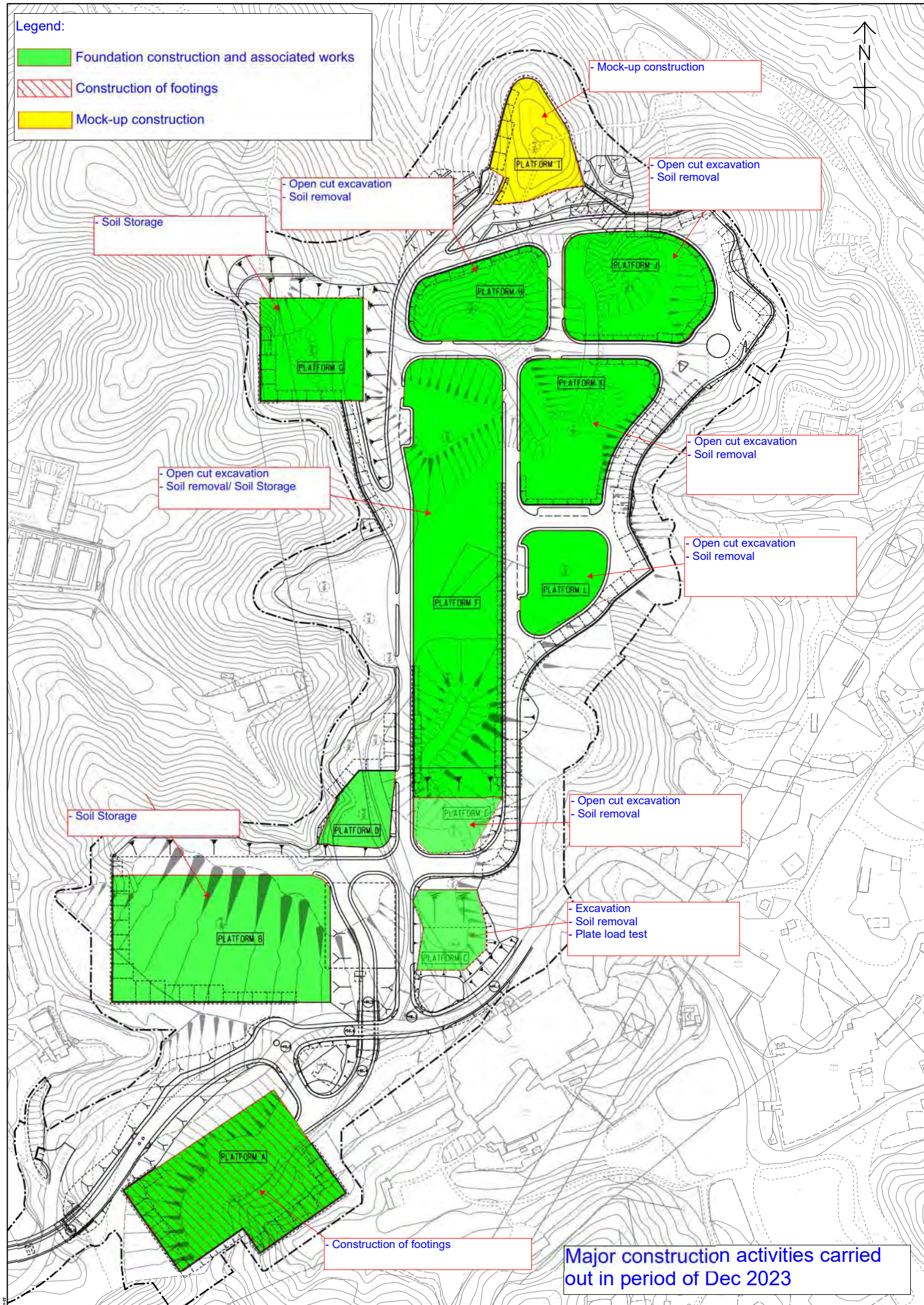
External Tasks  
External Milestone

Page 20

# Layout Plan with major construction activities

Legend:

- Foundation construction and associated works
- Construction of footings
- Mock-up construction



- Soil Storage

- Open cut excavation  
- Soil removal

- Mock-up construction

- Open cut excavation  
- Soil removal

- Open cut excavation  
- Soil removal/ Soil Storage

- Open cut excavation  
- Soil removal

- Open cut excavation  
- Soil removal

- Soil Storage

- Open cut excavation  
- Soil removal

- Excavation  
- Soil removal  
- Plate load test

- Construction of footings

Major construction activities carried out in period of Dec 2023

Legend:

- Foundation construction and associated works
- Construction of footings
- Mock-up construction



Soil Storage

- Open cut excavation  
- Soil removal  
- U.U. Lead in and Pipe Duct Connection

- Mock-up construction

- Open cut excavation  
- Soil removal  
- U.U. Lead in and Pipe Duct Connection

- Open cut excavation  
- Soil removal/ Soil Storage

- Open cut excavation  
- Soil removal  
- U.U. Lead in and Pipe Duct Connection

- Open cut excavation  
- Soil removal  
- U.U. Lead in and Pipe Duct Connection

- Soil Storage  
- Open cut excavation  
- Soil removal  
- Construction of footings

- Open cut excavation  
- Soil removal  
- Construction of footings

- Excavation  
- Soil removal  
- Construction of pile cap  
- Construction of footings

- Construction of footings  
- U.U. Lead in and Pipe Duct Connection  
- Backfilling

Major construction activities carried out in period of Jan 2024~ Mar 2024

# Proactive Environmental Protection Proforma



Ref*	Proposed Construction Method	Location/Working Period	Anticipated Major Impacts	Recommended Mitigation Measures
EIA 3.9.1; EM&A Log 2.2	Open cut excavation	Kong Nga Po Site	Dust impact from excavation activities and earth moving	<ul style="list-style-type: none"> <li>• Use of regular water spraying (once every 1.25 hours or 8 times per day) at all active works area exposed site surfaces and unpaved roads, particularly during dry weather</li> <li>• Deploy water bowser for regular water spraying to enhance dust suppression</li> <li>• Manual water spraying for dusty operation where inaccessible by water bowser</li> <li>• Speed control of site transportation</li> <li>• Stockpile of dusty materials will be covered by tarpaulin sheets to avoid wind-blown dust</li> <li>• Vehicles used for transporting dusty materials/spoils will be covered by mechanical cover before leaving the site</li> <li>• Wheel washing facilities will be provided and cleaning the wheel of all vehicles before leaving the site</li> </ul>
EIA 4.4.6; EM&A Log 3.2			Noise Control	<ul style="list-style-type: none"> <li>• Regular inspection and maintenance of plant &amp; equipment in good condition</li> </ul>

				<ul style="list-style-type: none"> <li>• Enclose the noisy part of machineries with noise enclosure</li> <li>• Adopt of Quality Powered Mechanical Equipment (QPME) if possible</li> </ul>
			Working in Restricted Hours	<ul style="list-style-type: none"> <li>• Valid construction noise permit should be obtained and displayed on site</li> <li>• In case of non-compliance with the construction noise criteria, more frequent monitoring and action should be carried out</li> </ul>
EIA 5.6.1.2; EM&A Log 4.2			Water Pollution Control	<ul style="list-style-type: none"> <li>• Cover the stockpiles of construction materials to reduce the potential for water pollution</li> <li>• Provide wastewater treatment facilities prior to discharge of wastewater</li> <li>• Regular inspection and maintenance of wastewater treatment facilities</li> <li>• Wastewater pumped out of the excavation areas will be treated to remove suspended solids prior to discharge</li> <li>• Hard paving or well-compact of main haul road to minimize washout of soil</li> <li>• Wheels of all vehicles and plants will be cleaned before leaving the work areas to remove sediment, soil and debris from the tracked. The wastewater will be treated and reused on site or discharged.</li> </ul>
EIA 7.5.1.1 &			Waste Generation	<ul style="list-style-type: none"> <li>• Training of site personnel in proper waste management and</li> </ul>

7.5.1.2; EM&A Log 6.2				<p>chemical handling procedures</p> <ul style="list-style-type: none"> <li>• Proper storage and sorting of excavated inert materials to maximize on site reuse for backfilling</li> <li>• Surplus inert C&amp;D materials will be disposed of at designated Government's PFRF.</li> </ul>
EIA 7.5.1.4; EM&A Log 6.2			Chemical Waste	<ul style="list-style-type: none"> <li>• Chemical waste should be stored at chemical waste container and collected by a licensed collector to transport and dispose of at the approved Chemical Waste Treatment Centre</li> <li>• Drip tray and chemical spillage kit will be provided on site</li> </ul>
EIA 9.7.1 and EM&A Log 8.3			Ecology Concern	<ul style="list-style-type: none"> <li>• Provide training to frontline workers for the conservative species</li> <li>• Provision of protective fence for the conservative species</li> <li>• Regular inspection for concerned vegetation and conservative species</li> </ul>
EIA Table 10.11; EM&A Table 9.1			Landscape and Visual Impact	<ul style="list-style-type: none"> <li>• Preservation of existing trees will be undertaken in accordance with DEVB TC(W) 7/2015 and Guidelines for Tree Risk Assessment and Management Arrangement</li> <li>• Restrict construction area to minimize the impact on existing retained trees</li> </ul>
EIA 3.9.1; EM&A Log 2.2	Soil Removal	Kong Nga Po Site	Dust impact from excavation activities and earth	<ul style="list-style-type: none"> <li>• Use of regular water spraying (once every 1.25 hours or 8 times per day) at all active works area exposed site surfaces and unpaved roads, particularly during dry weather</li> </ul>

			moving	<ul style="list-style-type: none"> <li>• Water spraying during loading and unloading of excavated materials</li> <li>• Vehicles used for transporting dusty materials/spoils will be covered by mechanical cover before leaving the site</li> <li>• Deploy water bowser for regular water spraying to enhance dust suppression</li> <li>• Speed control of site transportation</li> <li>• Stockpile of dusty materials will be covered by tarpaulin sheets to avoid wind-blown dust</li> <li>• Wheel washing facilities will be provided and cleaning the wheel of all vehicles before leaving the site</li> </ul>
EIA 4.4.6; EM&A Log 3.2			Noise Control	<ul style="list-style-type: none"> <li>• Regular inspection and maintenance of plant &amp; equipment in good condition</li> <li>• Enclose the noisy part of machineries with noise enclosure</li> <li>• Adopt of Quality Powered Mechanical Equipment (QPME) if possible</li> </ul>
			Working in Restricted Hours	<ul style="list-style-type: none"> <li>• Valid construction noise permit should be obtained and displayed on site</li> <li>• In case of non-compliance with the construction noise criteria, more frequent monitoring and action should be carried out</li> </ul>
EIA 5.6.1.2; EM&A Log 4.2			Water Pollution Control	<ul style="list-style-type: none"> <li>• Cover the stockpiles of excavated materials to reduce the potential for water pollution</li> </ul>

				<ul style="list-style-type: none"> <li>• Provide wastewater treatment facilities prior to discharge of wastewater</li> <li>• Regular inspection and maintenance of wastewater treatment facilities</li> <li>• Wheels of all vehicles and plants will be cleaned before leaving the work areas to remove sediment, soil and debris from the tracked. The wastewater will be treated and reused on site or discharged.</li> </ul>
EIA 7.5.1.1 & 7.5.1.2; EM&A Log 6.2			Waste Generation	<ul style="list-style-type: none"> <li>• Training of site personnel in proper waste management and chemical handling procedures</li> <li>• Proper storage and sorting of excavated inert materials to maximize on site reuse for backfilling</li> <li>• Surplus inert C&amp;D materials will be disposed of at designated Government's PFRF.</li> </ul>
EIA 7.5.1.4; EM&A Log 6.2			Chemical Waste	<ul style="list-style-type: none"> <li>• Chemical waste should be stored at chemical waste container and collected by a licensed collector to transport and dispose of at the approved Chemical Waste Treatment Centre</li> <li>• Drip tray and chemical spillage kit will be provided on site</li> </ul>
EIA 9.7.1 and EM&A Log 8.3			Ecology Concern	<ul style="list-style-type: none"> <li>• Provide training to frontline workers for the conservative species</li> <li>• Provision of protective fence for the conservative species</li> <li>• Regular inspection for concerned vegetation and conservative</li> </ul>

				species
EIA Table 10.11; EM&A Table 9.1			Landscape and Visual Impact	<ul style="list-style-type: none"> <li>• Preservation of existing trees will be undertaken in accordance with DEVB TC(W) 7/2015 and Guidelines for Tree Risk Assessment and Management Arrangement</li> <li>• Restrict construction area to minimize the impact on existing retained trees</li> </ul>
EIA 3.9.1; EM&A Log 2.2	Construction of footings	Kong Nga Po Site	Air	<ul style="list-style-type: none"> <li>• Regular inspection and maintenance of plant and equipment in good condition</li> <li>• Regularly clean up stockpiles and debris to avoid accumulation of materials</li> <li>• Dusty materials exceeding 20 bags shall be stored in area sheltered on top and the three sides or covered entirely by impervious sheeting.</li> </ul>
EIA 4.4.6; EM&A Log 3.2			Noise Control	<ul style="list-style-type: none"> <li>• Regular inspection and maintenance of plant &amp; equipment in good condition</li> <li>• Enclose the noisy part of machineries with noise enclosure</li> <li>• Adopt of Quality Powered Mechanical Equipment (QPME) if possible</li> </ul>
			Working in Restricted Hours	<ul style="list-style-type: none"> <li>• Valid construction noise permit should be obtained and displayed on site</li> <li>• In case of non-compliance with the construction noise criteria, more frequent monitoring and action should be carried out</li> </ul>

EIA 5.6.1.2; EM&A Log 4.2			Water Pollution Control	<ul style="list-style-type: none"> <li>Wheels of all vehicles and plants will be cleaned before leaving the work areas to remove sediment, soil and debris from the tracked. The wastewater will be treated and reused on site or discharged.</li> <li>Designated location for residual concrete washout</li> <li>Provide wastewater treatment facilities prior to discharge of wastewater</li> </ul>
EIA 7.5.1.4; EM&A Log			Chemical Waste	<ul style="list-style-type: none"> <li>Drip tray and chemical spillage kit shall be provided on site</li> </ul>
EIA 9.7.1 and EM&A Log 8.3			Ecology Concern	<ul style="list-style-type: none"> <li>Provide training to frontline workers for the conservative species</li> <li>Provision of protective fence for the conservative species</li> <li>Regular inspection for concerned vegetation and conservative species</li> </ul>
EIA Table 10.11; EM&A Table 9.1			Landscape and Visual Impact	<ul style="list-style-type: none"> <li>Preservation of existing trees will be undertaken in accordance with DEVB TC(W) 7/2015 and Guidelines for Tree Risk Assessment and Management Arrangement</li> <li>Implement temporary traffic arrangement which control construction area to minimize landscape and visual impacts</li> </ul>
EIA 3.9.1; EM&A Log 2.2	Construction of pile cap	Kong Nga Po Site	Air	<ul style="list-style-type: none"> <li>Regular inspection and maintenance of plant and equipment in good condition</li> <li>Regularly clean up stockpiles and debris to avoid</li> </ul>


				<p>accumulation of materials</p> <ul style="list-style-type: none"> <li>Dusty materials exceeding 20 bags shall be stored in area sheltered on top and the three sides or covered entirely by impervious sheeting.</li> </ul>
EIA 4.4.6; EM&A Log 3.2			Noise Control	<ul style="list-style-type: none"> <li>Regular inspection and maintenance of plant &amp; equipment in good condition</li> <li>Enclose the noisy part of machineries with noise enclosure</li> <li>Adopt of Quality Powered Mechanical Equipment (QPME) if possible</li> </ul>
			Working in Restricted Hours	<ul style="list-style-type: none"> <li>Valid construction noise permit should be obtained and displayed on site</li> <li>In case of non-compliance with the construction noise criteria, more frequent monitoring and action should be carried out</li> </ul>
EIA 5.6.1.2; EM&A Log 4.2			Water Pollution Control	<ul style="list-style-type: none"> <li>Cover the stockpiles of construction materials to reduce the potential for water pollution</li> <li>Provide wastewater treatment facilities prior to discharge of wastewater</li> <li>Wastewater generated from piling or surface runoff shall be treated prior to discharge</li> </ul>
EIA 7.5.1.1; EM&A Log 6.2			Waste Management	<ul style="list-style-type: none"> <li>Cover stockpiles of C&amp;D materials by impervious sheets to avoid wind-blown dust.</li> <li>Spray water on all dusty materials including C&amp;D materials</li> </ul>



				immediately prior to any loading transfer operation
EIA 7.5.1.4; EM&A Log 6.2			Chemical Waste	<ul style="list-style-type: none"> <li>Drip tray and chemical spillage kit shall be provided on site</li> </ul>
EIA 9.7.1 and EM&A Log 8.3			Ecology Concern	<ul style="list-style-type: none"> <li>Provide training to frontline workers for the conservative species</li> <li>Provision of protective fence for the conservative species</li> <li>Regular inspection for concerned vegetation and conservative species</li> </ul>
EIA Table 10.11; EM&A Table 9.1			Landscape and Visual Impact	<ul style="list-style-type: none"> <li>Preservation of existing trees will be undertaken in accordance with DEVB TC(W) 7/2015 and Guidelines for Tree Risk Assessment and Management Arrangement</li> <li>Implement temporary traffic arrangement which control construction area to minimize landscape and visual impacts</li> </ul>

*\*EIA Ref/ EM&A Log/ Design Document Ref*

*\*\*Details of equipment, vehicles, plants, processes, technologies for the construction method*

Ref*	Proposed Construction Method	Location/Working Period	Anticipated Major Impacts	Recommended Mitigation Measures	Photo Records (Partial)
EIA 3.9.1; EM&A Log 2.2	Open cut excavation	Kong Nga Po Site	Dust impact	<ul style="list-style-type: none"> <li>• Deploy water bowser for regular water spraying to enhance dust suppression</li> <li>• Manual water spraying for dust suppression</li> <li>• Regular inspection and maintenance of plant and equipment in good condition</li> <li>• Cover stockpile with impervious sheets or grout</li> <li>• Provide wheel washing facility at site entrance</li> </ul>	 <p>By main contractor at KNP site</p>



--	--	--	--	--





By main contractor at KNP site



By main contractor at KNP site

<p>EIA 4.4.6; EM&amp;A Log 3.2</p>			<p>Noise</p>	<ul style="list-style-type: none"> <li>• Regular inspection and maintenance of plant &amp; equipment in good condition</li> <li>• Deploy Quality Powered Mechanical Equipment (QPME) if possible</li> <li>• Provide noise insulating mat for certain powered mechanical equipment.</li> <li>• Valid construction noise permit should be displayed at site entrance.</li> </ul>	 <p>By main contractor at KNP site</p>
<p>EIA 9.7.1 and EM&amp;A Log 8.3</p>			<p>Ecology Concern</p>	<ul style="list-style-type: none"> <li>• Provide training to workers about the conservative species</li> <li>• Provision of protective fence for the conservative species</li> <li>• Regular inspection for concerned vegetation</li> </ul>	

				<p>and conservative species</p>	<p>By main contractor at KNP site</p>  <p>By subcontractor at KNP site</p>
<p>EIA 3.9.1; EM&amp;A Log 2.2</p>	<p>Soil Removal</p>	<p>Kong Nga Po Site</p>	<p>Air</p>	<ul style="list-style-type: none"> <li>• Cover dusty materials with impervious sheets</li> <li>• Exposed slopes covered with waterproof layers such as tarpaulin sheets or grout to reduce the potential for sediment laden runoff entering the drainage system.</li> </ul>	 <p>By subcontractor at KNP site</p>

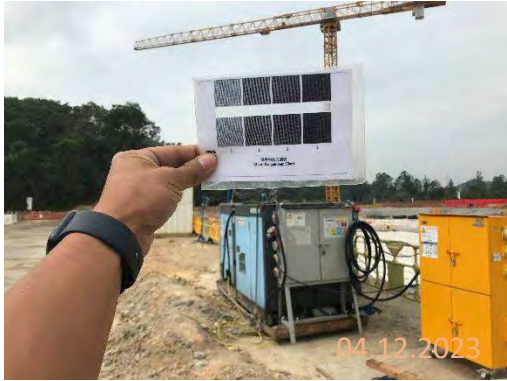

--	--	--	--	--





By subcontractor at KNP site



By main contractor at KNP site

					 <p data-bbox="1543 639 1939 671">By main contractor at KNP site</p>
<p data-bbox="203 735 376 863">EIA 4.4.6; EM&amp;A Log 3.2</p>			<p data-bbox="887 735 965 767">Noise</p>	<ul data-bbox="1137 735 1518 1246" style="list-style-type: none"> <li data-bbox="1137 735 1518 911">• Regular inspection and maintenance of plant &amp; equipment in good condition</li> <li data-bbox="1137 927 1518 1054">• Deploy Quality Powered Mechanical Equipment (QPME) if possible</li> <li data-bbox="1137 1070 1518 1246">• Noise enclosure or acoustic shed should be used to cover stationary PME such as air</li> </ul>	 <p data-bbox="1543 1125 1939 1157">By main contractor at KNP site</p>

				<p>compressor or generator.</p>	 <p>By main contractor at KNP site</p>
<p>EIA 5.6.1.2 and EM&amp;A Log 4.2</p>			<p>Water Quality</p>	<ul style="list-style-type: none"> <li>• Cover exposed slopes with impervious sheets or cement grout.</li> <li>• Wastewater pumped out of the excavation areas shall be treated to remove suspended solid prior to discharge.</li> <li>• Provide desilting/ sedimentation devices for wastewater treatment prior to discharge</li> </ul>	 <p>By main contractor at KNP site</p>





--	--	--	--	--







By main contractor at KNP site



By main contractor at KNP site

					 <p data-bbox="1541 639 1939 671">By main contractor at KNP site</p>
<p data-bbox="199 735 380 863">EIA 5.6.1.3 and EM&amp;A Log 4.2</p>			<p data-bbox="884 735 1070 767">Water Quality</p>	<ul data-bbox="1137 735 1518 815" style="list-style-type: none"> <li data-bbox="1137 735 1518 815">• Provide drip tray to prevent spillage of fuels.</li> </ul>	 <p data-bbox="1541 1123 1939 1155">By main contractor at KNP site</p>

<p>EIA Table 10.11; EM&amp;A Table 9.1</p>			<p>Landscape and Visual Impact</p>	<ul style="list-style-type: none"> <li>• Preservation of existing trees will be undertaken in accordance with DEVB TC(W) 7/2015 and Guidelines for Tree Risk Assessment and Management Arrangement</li> <li>• Implement temporary traffic arrangement which control construction area to minimize landscape and visual impacts</li> </ul>	 <p>By main contractor at KNP site</p>
<p>EIA 3.9.1; EM&amp;A Log 2.2</p>	<p>Construction of footings</p>	<p>Kong Nga Po Site</p>	<p>Air</p>	<ul style="list-style-type: none"> <li>• Cover dusty materials with impervious sheets</li> <li>• Exposed slopes covered with waterproof layers such as tarpaulin sheets or grout to reduce the potential for sediment laden runoff entering</li> </ul>	

				<p>the drainage system.</p> <ul style="list-style-type: none"> <li>Provide wheel washing facility at site entrance</li> </ul>	By main contractor at KNP site
EIA 4.4.6; EM&A Log 3.2			Noise	<ul style="list-style-type: none"> <li>Valid construction noise permit should be obtained and displayed on site</li> </ul>	 <p>By main contractor at KNP site</p>
EIA 5.6.1.3 and EM&A Log 4.2			Water Quality	<ul style="list-style-type: none"> <li>Surface water from concrete batching areas and the rest of the site should be separated as far as possible.</li> </ul>	 <p>By subcontractor at KNP site</p>