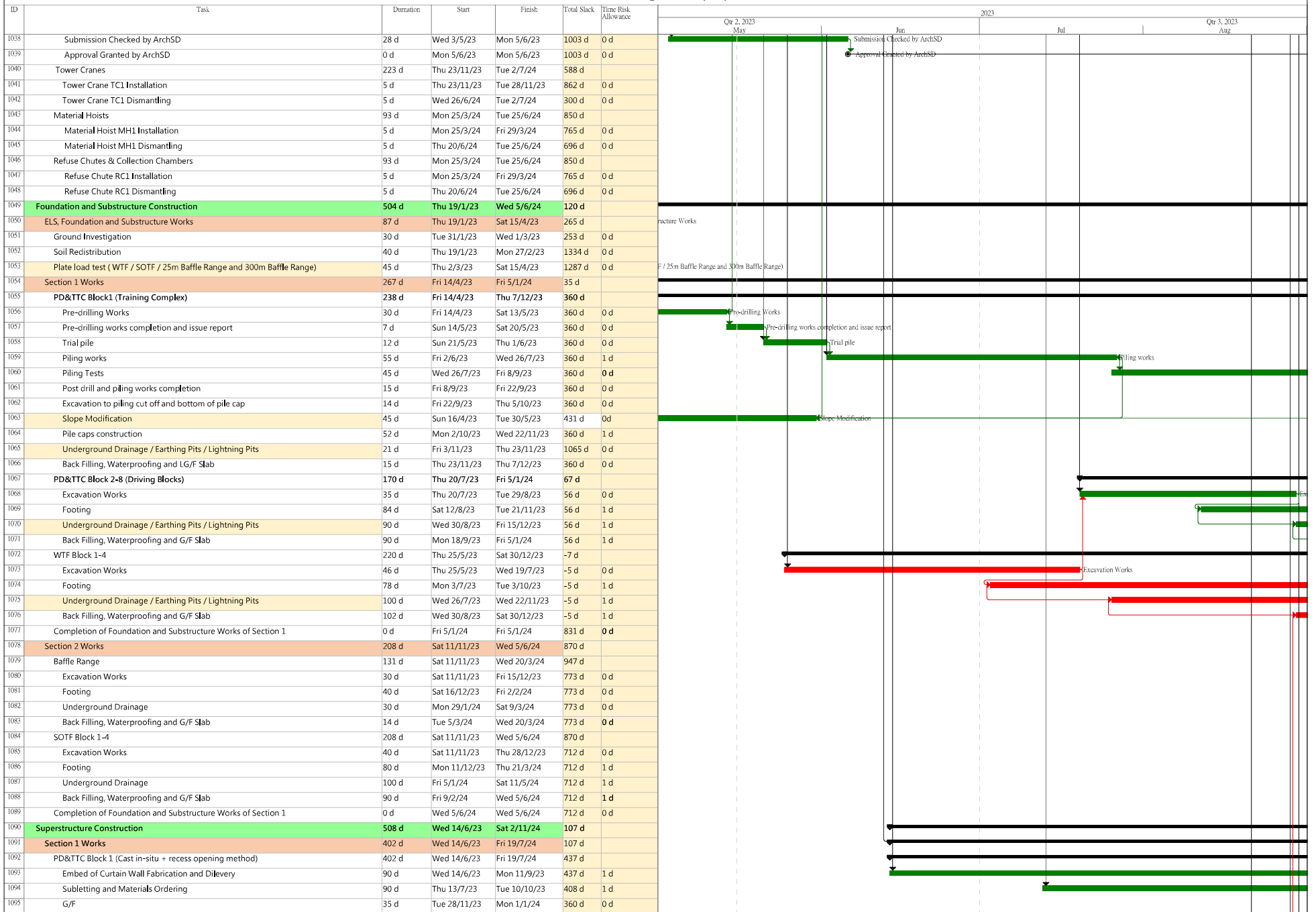


APPENDIX A
CONSTRUCTION PROGRAMME AND
PROACTIVE ENVIRONMENTAL
PROTECTION PROFORMA

Design & Construction of Kong Nga Po Police Training Facilities
Master Programme (MP)

Revision : 02



Task	Milestone	Inactive Milestone	Manual Task	Manual Summary Rollup	Start-only	External Tasks
Critical Task	Summary	Inactive Summary	Duration-only	Manual Summary	Finish-only	External Milestone

**Design & Construction of Kong Nga Po Police Training Facilities
Master Programme (MP)**

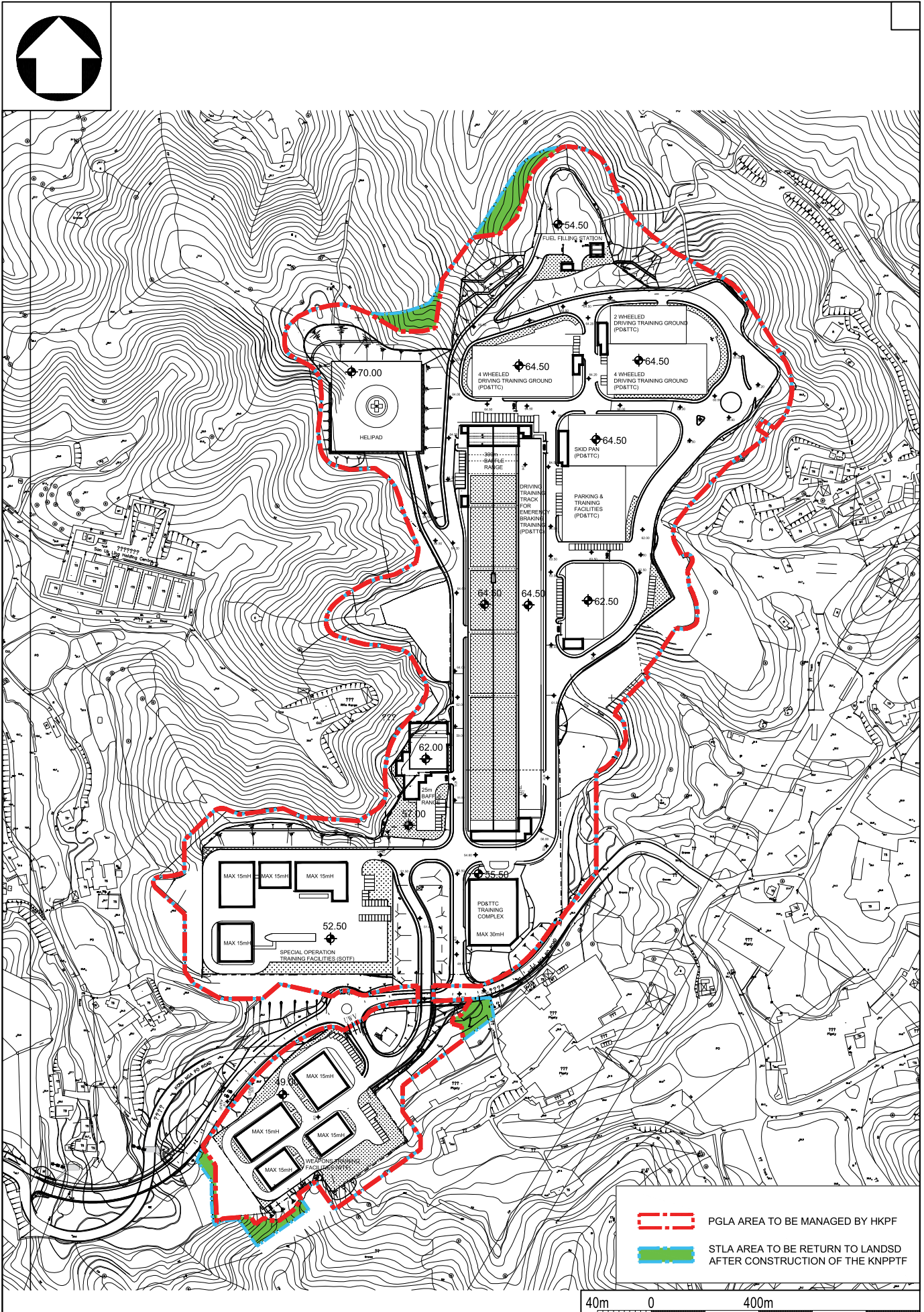
Revision : 02



ID	Task	Duration	Start	Finish	Total Slack	Time Risk Allowance	2023			
							Qtr 2, 2023 May	Jun	Jul	Qtr 3, 2023 Aug
1096	1/F	30 d	Thu 28/12/23	Fri 26/1/24	360 d	0 d				
1097	2/F	18 d	Mon 22/1/24	Thu 8/2/24	360 d	0 d				
1098	3/F	18 d	Sun 4/2/24	Wed 21/2/24	360 d	0 d				
1099	4/F	18 d	Mon 19/2/24	Thu 7/3/24	366 d	0 d				
1100	R/F	18 d	Wed 6/3/24	Sat 23/3/24	366 d	0 d				
1101	UR/F	14 d	Sun 24/3/24	Sat 6/4/24	366 d	0 d				
1102	TR/F	14 d	Sun 7/4/24	Sat 20/4/24	366 d	0 d				
1103	Opening of Tower Crane	17 d	Wed 3/7/24	Fri 19/7/24	371 d	0 d				
1104	MiC Installation (Lifting through opening + Slide-in method)	310 d	Mon 21/8/23	Tue 25/6/24	372 d					
1105	Structural Materials Submission & Approval	60 d	Mon 21/8/23	Thu 19/10/23	372 d	1 d				
1106	Fitting Out Materials Submission & Approval	60 d	Tue 24/10/23	Fri 22/12/23	1036 d	1 d				
1107	Structural materials Ordering and Fabrication of MiC Carcass	65 d	Fri 20/10/23	Sat 23/12/23	372 d	1d				
1108	MiC Fabrication / Installation and Dilevery on Site	110 d	Sun 24/12/23	Thu 11/4/24	372 d	1 d				
1109	On-site Trial Installation	5 d	Fri 12/4/24	Tue 16/4/24	372 d	0 d				
1110	MiC / MiMep / Precast Beam and Slab Installation	70 d	Wed 17/4/24	Tue 25/6/24	372 d	1 d				
1111	PD&TTC Block 2-8 and Carpark	82 d	Thu 30/11/23	Mon 19/2/24	68 d					
1112	Block 2 Carpark	14 d	Thu 30/11/23	Fri 15/12/23	56 d	0 d				
1113	Block 3 (2-wheeled driving ground) (5Nos.of MiC)	7 d	Sat 16/12/23	Sat 23/12/23	56 d	0 d				
1114	Block 4 (Emergency Braking Training) (11Nos.of MiC)	10 d	Mon 25/12/23	Sat 6/1/24	56 d	0 d				
1115	Block 5 (Skid Pad) (14 Nos.of MiC)	14 d	Mon 8/1/24	Tue 23/1/24	56 d	0 d				
1116	Block 6 (4-wheeled driving ground) (5Nos.of MiC)	7 d	Wed 24/1/24	Wed 31/1/24	56 d	0 d				
1117	Block 7 (2-wheeled & 4-wheeled driving ground) (10Nos.of MiC)	10 d	Thu 1/2/24	Mon 19/2/24	56 d	0 d				
1118	Fuel filling Station	87 d	Mon 16/10/23	Wed 10/1/24	463 d					
1119	Underground fuel tank	45 d	Mon 16/10/23	Wed 6/12/23	377 d	0 d				
1120	Backfilling and G/F slab	14 d	Thu 7/12/23	Fri 22/12/23	377 d	0 d				
1121	Fuel station superstructure	14 d	Sat 23/12/23	Wed 10/1/24	377 d	0 d				
1122	WTF Block 1-4	161 d	Fri 6/10/23	Thu 14/3/24	-7 d					
1123	Block 1 (Admin Block)	68 d	Fri 6/10/23	Tue 12/12/23	-7 d					
1124	1/F	21 d	Fri 6/10/23	Tue 31/10/23	-5 d	0 d				
1125	2/F	16 d	Mon 30/10/23	Thu 16/11/23	-5 d	0 d				
1126	R/F	12 d	Wed 15/11/23	Tue 28/11/23	-5 d	0 d				
1127	TR/F	14 d	Mon 27/11/23	Tue 12/12/23	-5 d	0 d				
1128	Block 2 (Arcade and Residential Mock Bldg.)	68 d	Fri 6/10/23	Tue 12/12/23	2 d					
1129	1/F	21 d	Fri 6/10/23	Tue 31/10/23	2 d	0 d				
1130	2/F	16 d	Mon 30/10/23	Thu 16/11/23	2 d	0 d				
1131	R/F	12 d	Wed 15/11/23	Tue 28/11/23	2 d	0 d				
1132	TR/F	14 d	Mon 27/11/23	Tue 12/12/23	2 d	0 d				
1133	Block 3 (MOE Bldg.)	95 d	Mon 11/12/23	Thu 14/3/24	-6 d					
1134	1/F	26 d	Mon 11/12/23	Thu 11/1/24	-5 d	0 d				
1135	2/F	18 d	Wed 10/1/24	Tue 30/1/24	-5 d	0 d				
1136	R/F	18 d	Mon 29/1/24	Sat 24/2/24	-5 d	0 d				
1137	TR/F	18 d	Fri 23/2/24	Thu 14/3/24	-5 d	0 d				
1138	Block 4 (Marine Mock Bldg.)	95 d	Mon 11/12/23	Thu 14/3/24	2 d					
1139	1/F	26 d	Mon 11/12/23	Thu 11/1/24	2 d	0 d				
1140	2/F	18 d	Wed 10/1/24	Tue 30/1/24	2 d	0 d				
1141	R/F	18 d	Mon 29/1/24	Sat 24/2/24	2 d	0 d				
1142	TR/F	18 d	Fri 23/2/24	Thu 14/3/24	2 d	0 d				
1143	Completion of Superstructure of Section 1	0 d	Sat 20/4/24	Sat 20/4/24	370 d	0 d				
1144	Section 2 Works	257 d	Tue 20/2/24	Sat 2/11/24	16 d					
1145	Baffle Range	129 d	Tue 20/2/24	Thu 27/6/24	69 d					
1146	300m Baffle Range	75 d	Tue 20/2/24	Wed 22/5/24	56 d					
1147	Installation of precast fence wall	30 d	Tue 20/2/24	Mon 25/3/24	56 d	0 d				
1148	Instillation of precast baffle	30 d	Wed 20/3/24	Fri 26/4/24	744 d	0 d				
1149	Baffle Range Ancillary Structure	45 d	Tue 26/3/24	Wed 22/5/24	56 d	0 d				
1150	Completion of 300m baffle range	0 d	Wed 22/5/24	Wed 22/5/24	56 d	0 d				
1151	25m Baffle Range	30 d	Thu 23/5/24	Thu 27/6/24	56 d	0 d				
1152	Helipad	45 d	Fri 28/6/24	Tue 20/8/24	56 d	0 d				
1153	SOTF Block 1-4	235 d	Wed 13/3/24	Sat 2/11/24	-6 d					

中國建築聯營
CHINA STATE JOINT VENTURE


Task	 Milestone	 Inactive Milestone	 Manual Task	 Manual Summary Rollup	 Start-only	 External Tasks
Critical Task	 Summary	 Inactive Summary	 Duration-only	 Manual Summary	 Finish-only	 External Milestone

Layout Plan with major construction activities



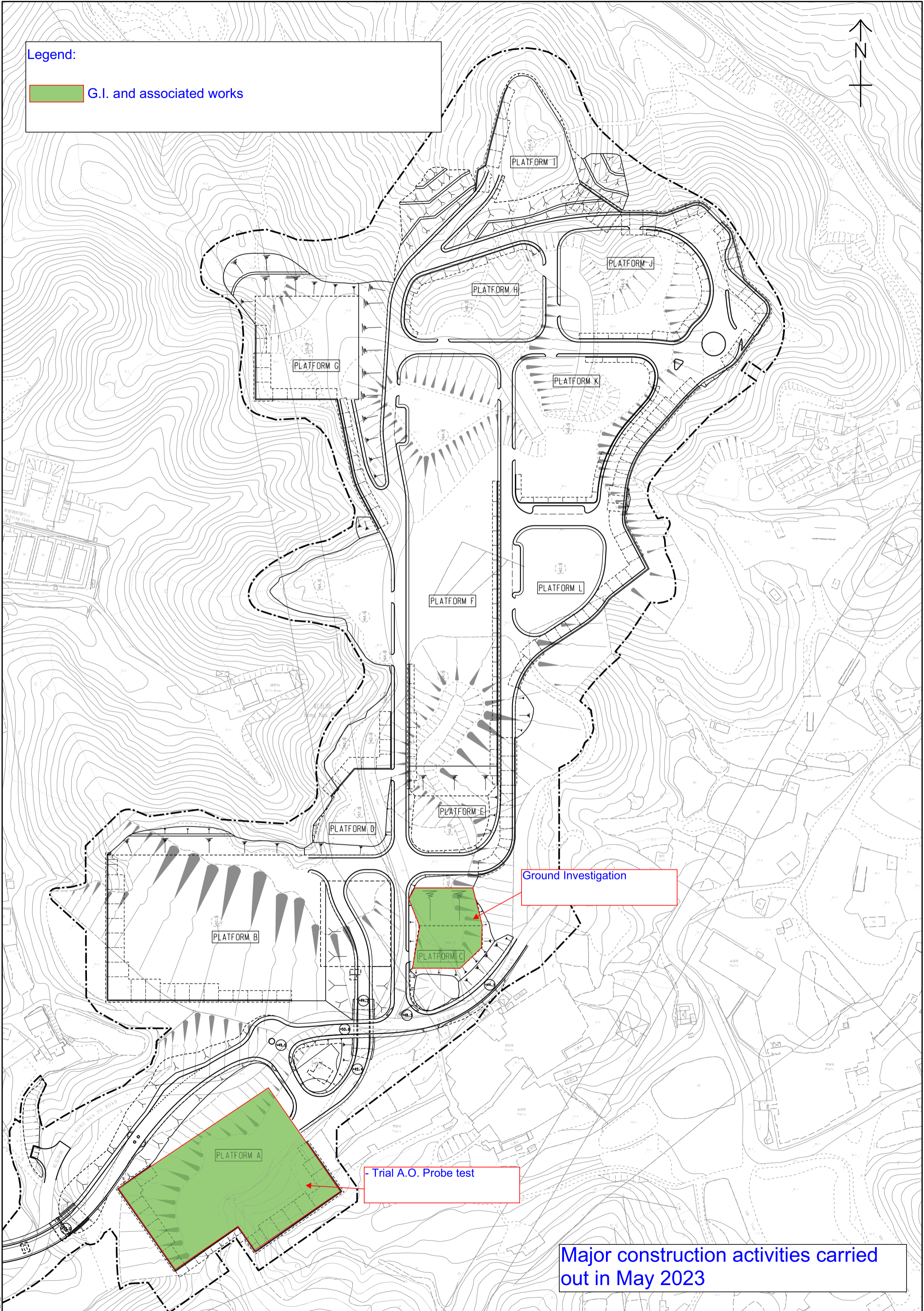
 PGLA AREA TO BE MANAGED BY HKPF
 STLA AREA TO BE RETURN TO LANDSD AFTER CONSTRUCTION OF THE KNPTF



<p>MASTER LAYOUT PLAN</p>	<p>PROJECT CODE: 3279LP PROPOSED MLP FOR KONG NGA PO TRAINING FACILITIES</p>	<p>DRAWING NO. PMB/8480/XA001</p>	<p>SCALE: 1:400</p> <p>DATE: AUGUST 2021</p>	 <p>ARCHITECTURAL SERVICES DEPARTMENT 建築署</p>
----------------------------------	---	--	--	---

Legend:

 G.I. and associated works



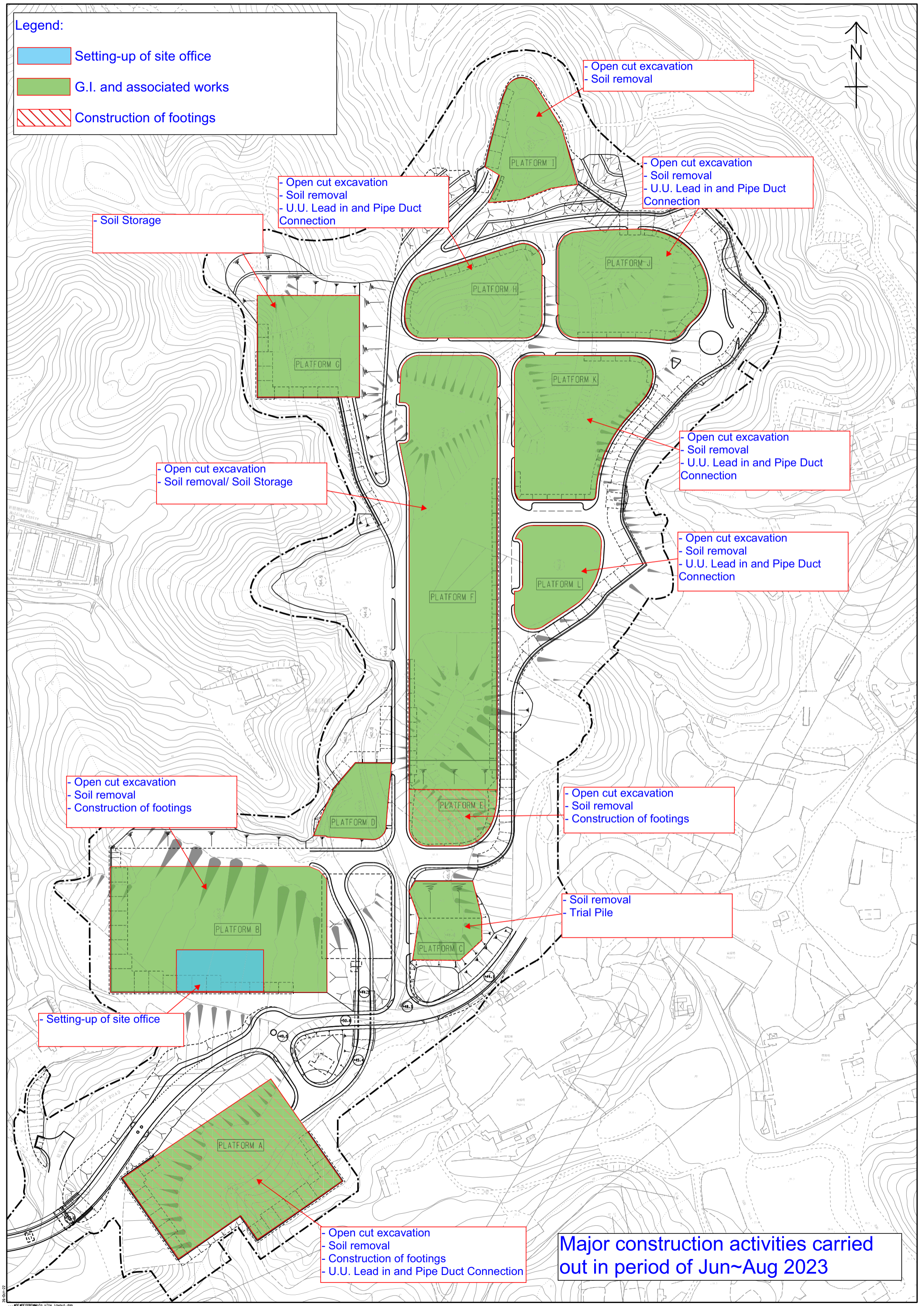
Ground Investigation

- Trial A.O. Probe test

Major construction activities carried out in May 2023

Legend:

- Setting-up of site office
- G.I. and associated works
- Construction of footings



- Soil Storage

- Open cut excavation
- Soil removal
- U.U. Lead in and Pipe Duct Connection

- Open cut excavation
- Soil removal

- Open cut excavation
- Soil removal
- U.U. Lead in and Pipe Duct Connection

- Open cut excavation
- Soil removal/ Soil Storage

- Open cut excavation
- Soil removal
- U.U. Lead in and Pipe Duct Connection

- Open cut excavation
- Soil removal
- U.U. Lead in and Pipe Duct Connection

- Open cut excavation
- Soil removal
- Construction of footings

- Open cut excavation
- Soil removal
- Construction of footings

- Setting-up of site office

- Soil removal
- Trial Pile

- Open cut excavation
- Soil removal
- Construction of footings
- U.U. Lead in and Pipe Duct Connection

Major construction activities carried out in period of Jun~Aug 2023

Proactive Environmental Protection Proforma

Design and Construction of Kong Nga Po Police Training Facilities
Proactive Environmental Protection Proforma

Working Period: June to August 2023

Ref*	Proposed Construction Method	Location/Working Period	Anticipated Major Impacts	Recommended Mitigation Measures
EIA 3.9.1; EM&A Log 2.2	Open cut excavation	Kong Nga Po Site	Dust impact from excavation activities and earth moving	<ul style="list-style-type: none"> • Use of regular water spraying (once every 1.25 hours or 8 times per day) at all active works area exposed site surfaces and unpaved roads, particularly during dry weather • Deploy water bowser for regular water spraying to enhance dust suppression • Manual water spraying for dusty operation where inaccessible by water bowser • Speed control of site transportation • Stockpile of dusty materials will be covered by tarpaulin sheets to avoid wind-blown dust • Vehicles used for transporting dusty materials/spoils will be covered by mechanical cover before leaving the site • Wheel washing facilities will be provided and cleaning the wheel of all vehicles before leaving the site
EIA 4.4.6; EM&A Log 3.2			Noise Control	<ul style="list-style-type: none"> • Regular inspection and maintenance of plant & equipment in good condition

				<ul style="list-style-type: none"> • Enclose the noisy part of machineries with noise enclosure • Adopt of Quality Powered Mechanical Equipment (QPME) if possible
			Working in Restricted Hours	<ul style="list-style-type: none"> • Valid construction noise permit should be obtained and displayed on site • In case of non-compliance with the construction noise criteria, more frequent monitoring and action should be carried out
EIA 5.6.1.2; EM&A Log 4.2			Water Pollution Control	<ul style="list-style-type: none"> • Cover the stockpiles of construction materials to reduce the potential for water pollution • Provide wastewater treatment facilities prior to discharge of wastewater • Regular inspection and maintenance of wastewater treatment facilities • Wastewater pumped out of the excavation areas will be treated to remove suspended solids prior to discharge • Hard paving or well-compact of main haul road to minimize washout of soil • Wheels of all vehicles and plants will be cleaned before leaving the work areas to remove sediment, soil and debris from the tracked. The wastewater will be treated and reused on site or discharged.
EIA 7.5.1.1 &			Waste Generation	<ul style="list-style-type: none"> • Training of site personnel in proper waste management and

7.5.1.2; EM&A Log 6.2				<p>chemical handling procedures</p> <ul style="list-style-type: none"> • Proper storage and sorting of excavated inert materials to maximize on site reuse for backfilling • Surplus inert C&D materials will be disposed of at designated Government's PFRF.
EIA 7.5.1.4; EM&A Log 6.2			Chemical Waste	<ul style="list-style-type: none"> • Chemical waste should be stored at chemical waste container and collected by a licensed collector to transport and dispose of at the approved Chemical Waste Treatment Centre • Drip tray and chemical spillage kit will be provided on site
EIA 9.7.1 and EM&A Log 8.3			Ecology Concern	<ul style="list-style-type: none"> • Provide training to frontline workers for the conservative species • Provision of protective fence for the conservative species • Regular inspection for concerned vegetation and conservative species
EIA Table 10.11; EM&A Table 9.1			Landscape and Visual Impact	<ul style="list-style-type: none"> • Preservation of existing trees will be undertaken in accordance with DEVB TC(W) 7/2015 and Guidelines for Tree Risk Assessment and Management Arrangement • Restrict construction area to minimize the impact on existing retained trees
EIA 3.9.1; EM&A Log 2.2	Soil Removal	Kong Nga Po Site	Dust impact from excavation activities and earth	<ul style="list-style-type: none"> • Use of regular water spraying (once every 1.25 hours or 8 times per day) at all active works area exposed site surfaces and unpaved roads, particularly during dry weather

			moving	<ul style="list-style-type: none"> • Water spraying during loading and unloading of excavated materials • Vehicles used for transporting dusty materials/spoils will be covered by mechanical cover before leaving the site • Deploy water bowser for regular water spraying to enhance dust suppression • Speed control of site transportation • Stockpile of dusty materials will be covered by tarpaulin sheets to avoid wind-blown dust • Wheel washing facilities will be provided and cleaning the wheel of all vehicles before leaving the site
EIA 4.4.6; EM&A Log 3.2			Noise Control	<ul style="list-style-type: none"> • Regular inspection and maintenance of plant & equipment in good condition • Enclose the noisy part of machineries with noise enclosure • Adopt of Quality Powered Mechanical Equipment (QPME) if possible
			Working in Restricted Hours	<ul style="list-style-type: none"> • Valid construction noise permit should be obtained and displayed on site • In case of non-compliance with the construction noise criteria, more frequent monitoring and action should be carried out
EIA 5.6.1.2; EM&A Log 4.2			Water Pollution Control	<ul style="list-style-type: none"> • Cover the stockpiles of excavated materials to reduce the potential for water pollution

				<ul style="list-style-type: none"> • Provide wastewater treatment facilities prior to discharge of wastewater • Regular inspection and maintenance of wastewater treatment facilities • Wheels of all vehicles and plants will be cleaned before leaving the work areas to remove sediment, soil and debris from the tracked. The wastewater will be treated and reused on site or discharged.
EIA 7.5.1.1 & 7.5.1.2; EM&A Log 6.2			Waste Generation	<ul style="list-style-type: none"> • Training of site personnel in proper waste management and chemical handling procedures • Proper storage and sorting of excavated inert materials to maximize on site reuse for backfilling • Surplus inert C&D materials will be disposed of at designated Government's PFRF.
EIA 7.5.1.4; EM&A Log 6.2			Chemical Waste	<ul style="list-style-type: none"> • Chemical waste should be stored at chemical waste container and collected by a licensed collector to transport and dispose of at the approved Chemical Waste Treatment Centre • Drip tray and chemical spillage kit will be provided on site
EIA 9.7.1 and EM&A Log 8.3			Ecology Concern	<ul style="list-style-type: none"> • Provide training to frontline workers for the conservative species • Provision of protective fence for the conservative species • Regular inspection for concerned vegetation and conservative

				species
EIA Table 10.11; EM&A Table 9.1			Landscape and Visual Impact	<ul style="list-style-type: none"> • Preservation of existing trees will be undertaken in accordance with DEVB TC(W) 7/2015 and Guidelines for Tree Risk Assessment and Management Arrangement • Restrict construction area to minimize the impact on existing retained trees
EIA 3.9.1; EM&A Log 2.2	Construction of footings	Kong Nga Po Site	Air	<ul style="list-style-type: none"> • Regular inspection and maintenance of plant and equipment in good condition • Regularly clean up stockpiles and debris to avoid accumulation of materials • Dusty materials exceeding 20 bags shall be stored in area sheltered on top and the three sides or covered entirely by impervious sheeting.
EIA 4.4.6; EM&A Log 3.2			Noise Control	<ul style="list-style-type: none"> • Regular inspection and maintenance of plant & equipment in good condition • Enclose the noisy part of machineries with noise enclosure • Adopt of Quality Powered Mechanical Equipment (QPME) if possible
			Working in Restricted Hours	<ul style="list-style-type: none"> • Valid construction noise permit should be obtained and displayed on site • In case of non-compliance with the construction noise criteria, more frequent monitoring and action should be carried out

EIA 5.6.1.2; EM&A Log 4.2			Water Pollution Control	<ul style="list-style-type: none"> Wheels of all vehicles and plants will be cleaned before leaving the work areas to remove sediment, soil and debris from the tracked. The wastewater will be treated and reused on site or discharged. Designated location for residual concrete washout Provide wastewater treatment facilities prior to discharge of wastewater
EIA 7.5.1.4; EM&A Log			Chemical Waste	<ul style="list-style-type: none"> Drip tray and chemical spillage kit shall be provided on site
EIA 9.7.1 and EM&A Log 8.3			Ecology Concern	<ul style="list-style-type: none"> Provide training to frontline workers for the conservative species Provision of protective fence for the conservative species Regular inspection for concerned vegetation and conservative species
EIA Table 10.11; EM&A Table 9.1			Landscape and Visual Impact	<ul style="list-style-type: none"> Preservation of existing trees will be undertaken in accordance with DEVB TC(W) 7/2015 and Guidelines for Tree Risk Assessment and Management Arrangement Implement temporary traffic arrangement which control construction area to minimize landscape and visual impacts
EIA 3.9.1; EM&A Log 2.2	Trial pile	Kong Nga Po Site	Air	<ul style="list-style-type: none"> Regular inspection and maintenance of plant and equipment in good condition Regularly clean up stockpiles and debris to avoid

				<p>accumulation of materials</p> <ul style="list-style-type: none"> Dusty materials exceeding 20 bags shall be stored in area sheltered on top and the three sides or covered entirely by impervious sheeting.
EIA 4.4.6; EM&A Log 3.2			Noise Control	<ul style="list-style-type: none"> Regular inspection and maintenance of plant & equipment in good condition Enclose the noisy part of machineries with noise enclosure Adopt of Quality Powered Mechanical Equipment (QPME) if possible
			Working in Restricted Hours	<ul style="list-style-type: none"> Valid construction noise permit should be obtained and displayed on site In case of non-compliance with the construction noise criteria, more frequent monitoring and action should be carried out
EIA 5.6.1.2; EM&A Log 4.2			Water Pollution Control	<ul style="list-style-type: none"> Cover the stockpiles of construction materials to reduce the potential for water pollution Provide wastewater treatment facilities prior to discharge of wastewater Wastewater generated from piling or surface runoff shall be treated prior to discharge
EIA 7.5.1.1; EM&A Log 6.2			Waste Management	<ul style="list-style-type: none"> Cover stockpiles of C&D materials by impervious sheets to avoid wind-blown dust. Spray water on all dusty materials including C&D materials


				immediately prior to any loading transfer operation
EIA 7.5.1.4; EM&A Log 6.2			Chemical Waste	<ul style="list-style-type: none"> Drip tray and chemical spillage kit shall be provided on site
EIA 9.7.1 and EM&A Log 8.3			Ecology Concern	<ul style="list-style-type: none"> Provide training to frontline workers for the conservative species Provision of protective fence for the conservative species Regular inspection for concerned vegetation and conservative species
EIA Table 10.11; EM&A Table 9.1			Landscape and Visual Impact	<ul style="list-style-type: none"> Preservation of existing trees will be undertaken in accordance with DEVB TC(W) 7/2015 and Guidelines for Tree Risk Assessment and Management Arrangement Implement temporary traffic arrangement which control construction area to minimize landscape and visual impacts

**EIA Ref/ EM&A Log/ Design Document Ref*

***Details of equipment, vehicles, plants, processes, technologies for the construction method*

Design and Construction of Kong Nga Po Police Training Facilities
Proactive Environmental Protection Proforma

Working Period: May 2023

Ref*	Proposed Construction Method	Location/Working Period	Anticipated Major Impacts	Recommended Mitigation Measures	Photo Records (Partial)
EIA 3.9.1; EM&A Log 2.2	Ground Investigation	Kong Nga Po Site	Dust impact	<ul style="list-style-type: none"> • Deploy water bowser for regular water spraying to enhance dust suppression • Manual water spraying for dust suppression • Regular inspection and maintenance of plant and equipment in good condition • Cover dusty materials with impervious sheets 	 <p>By main contractor at KNP site</p>



--	--	--	--	--





By main contractor at KNP site



By main contractor at KNP site

					 <p>By subcontractor at KNP site</p>
<p>EIA 4.4.6; EM&A Log 3.2</p>			<p>Noise</p>	<ul style="list-style-type: none"> • Regular inspection and maintenance of plant & equipment in good condition • Deploy Quality Powered Mechanical Equipment (QPME) if possible • Noise enclosure or acoustic shed should be used to cover stationary PME such as air compressor or generator. 	 <p>By main contractor at KNP site</p>

					
<p>EIA 9.7.1 and EM&A Log 8.3</p>			<p>Ecology Concern</p>	<ul style="list-style-type: none"> • Provide training to workers about the conservative species • Provision of protective fence for the conservative species • Regular inspection for concerned vegetation and conservative species 	

By main contractor at KNP site

By main contractor at KNP site

--	--	--	--	--



By sub-contractor at KNP site